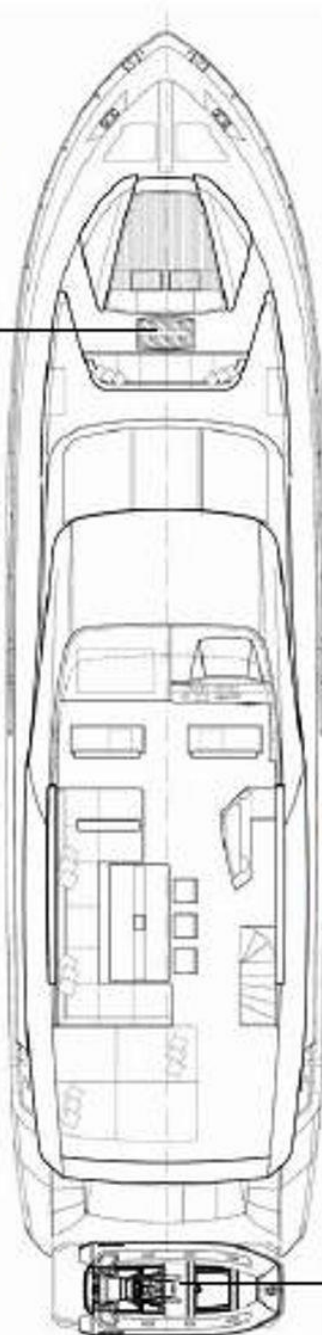


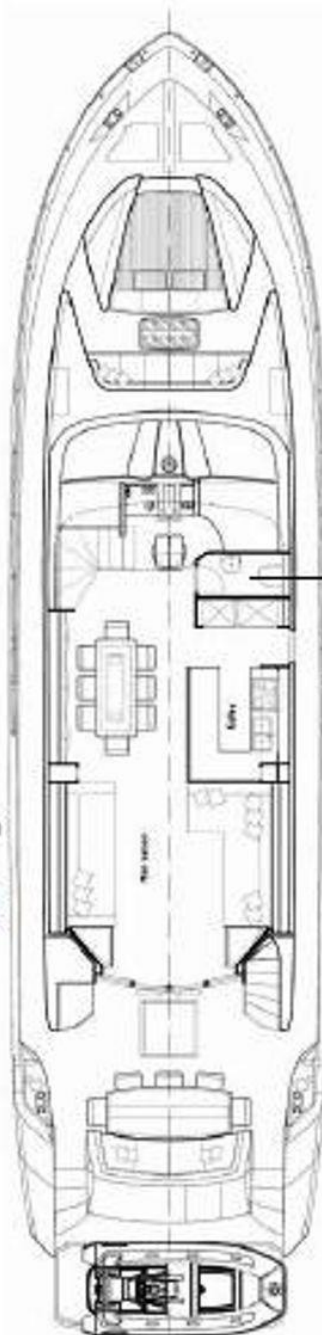
### Fly deck

Cool off:  
A Jacuzzi,  
concealed under  
sunbeds is a  
tempting option  
to complement  
the foredeck  
lounge.



### Main deck

Up to you:  
The layout is  
flexible. Hull  
No. 1 differs  
from this with  
a larger galley  
and dining area  
to starboard  
but no dayhead  
aft of the helm.



### Lower deck

How suite it is:  
A four-cabin  
layout allows  
for a full-beam  
master suite.



Tender free:  
The flybridge  
is left for  
recreation with  
the tender  
stowed on the  
hi-lo platform.

Get help:  
The yacht can  
sleep three  
crewmembers  
in two cabins.

