

BAGLIETTO PRESENTS

# DOM115

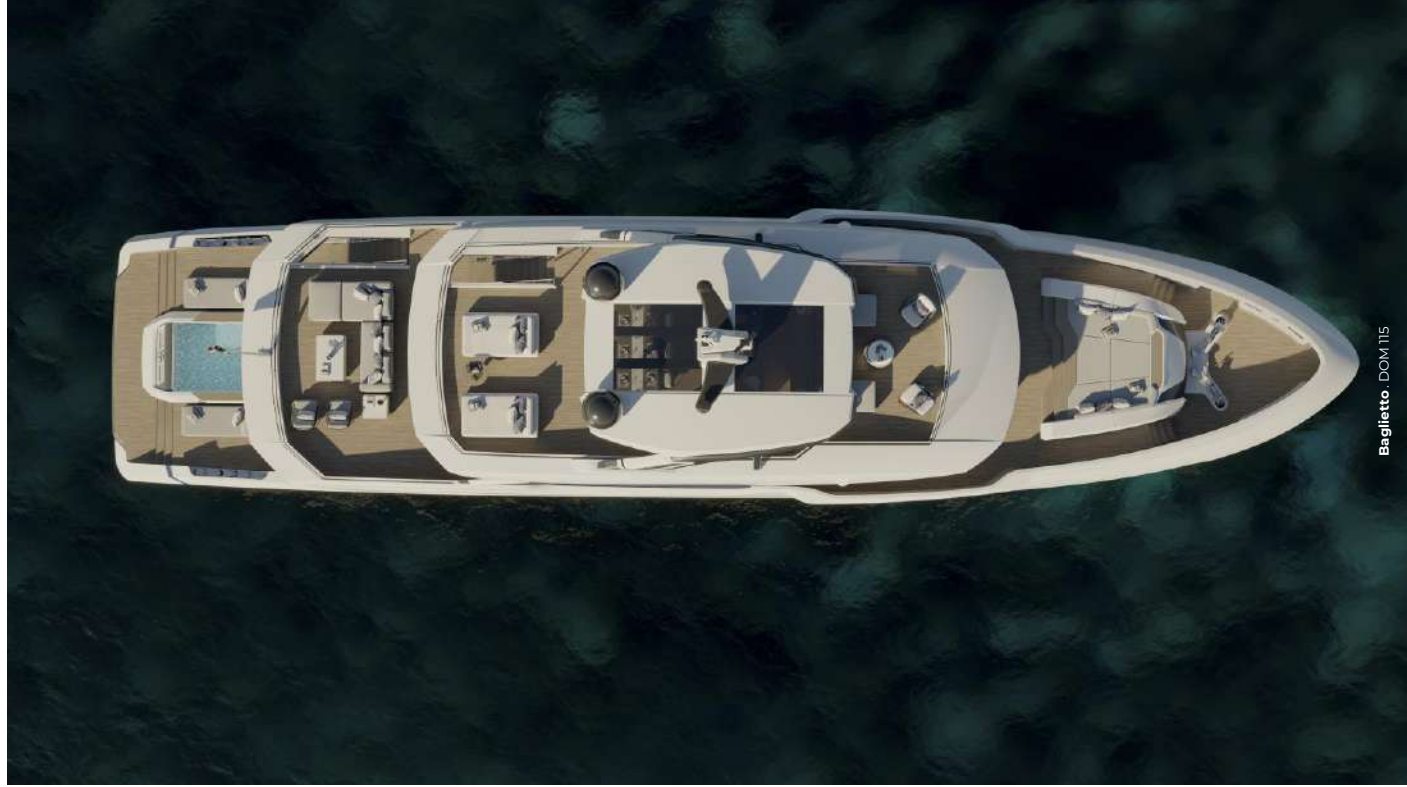


BAGLIETTO  
1854





**There  
are more  
horizons  
than you  
can ever  
imagine.**









Length overall

**34.50**

METRES // 115 FT

---

Beam

**7.80**

METRES // 25.5 FT

---

Top Speed

**14.5**

KNOTS

---

GRT Under

**300**

ton

---

Cruise Speed

**13.5**

KNOTS

---

Range at 10.0 knots

**3,700**

NM

---

Guests

**10+2**

IN 5 CABINS WITH

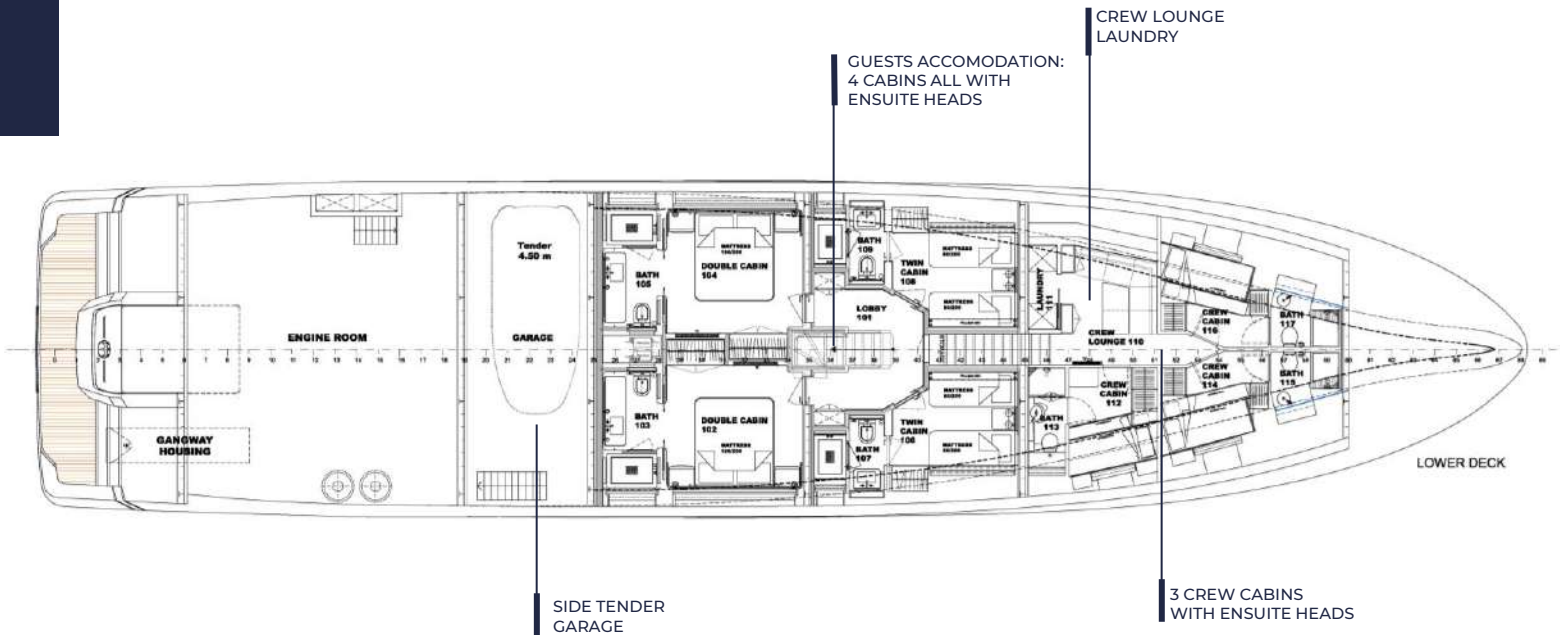
**7**

CREWS IN 4 CABINS





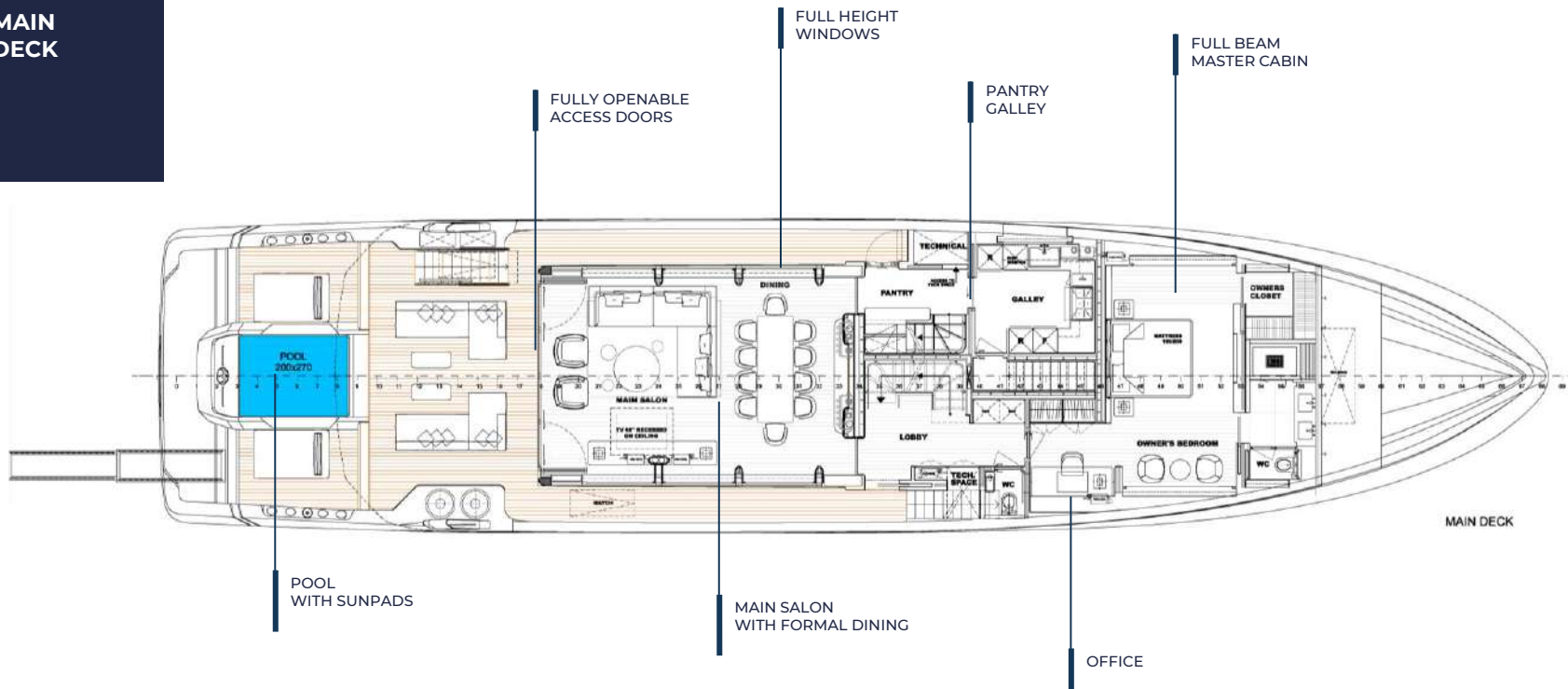
## LOWER DECK





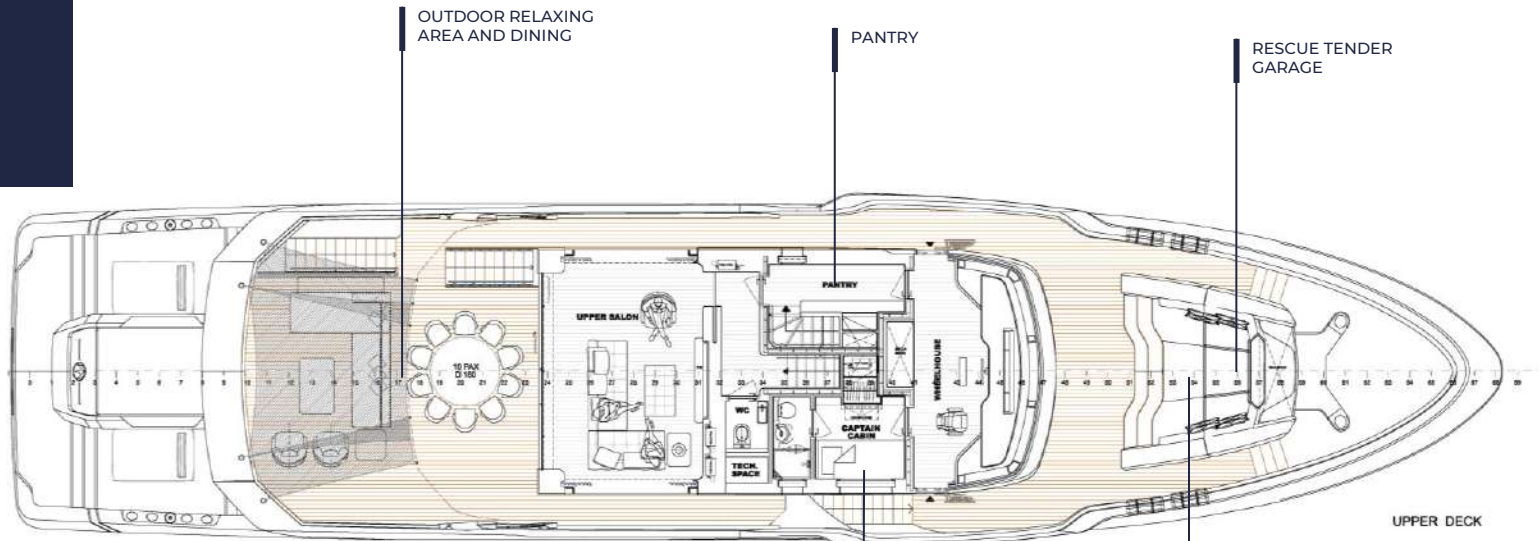


## MAIN DECK

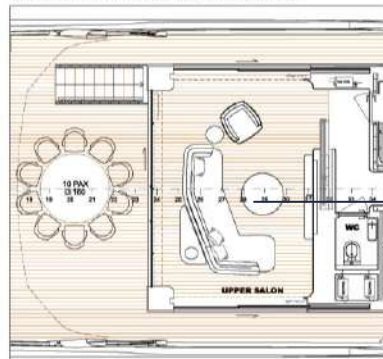




## UPPER DECK



UD ALTERNATIVE LAYOUT: VERANDA OPTION

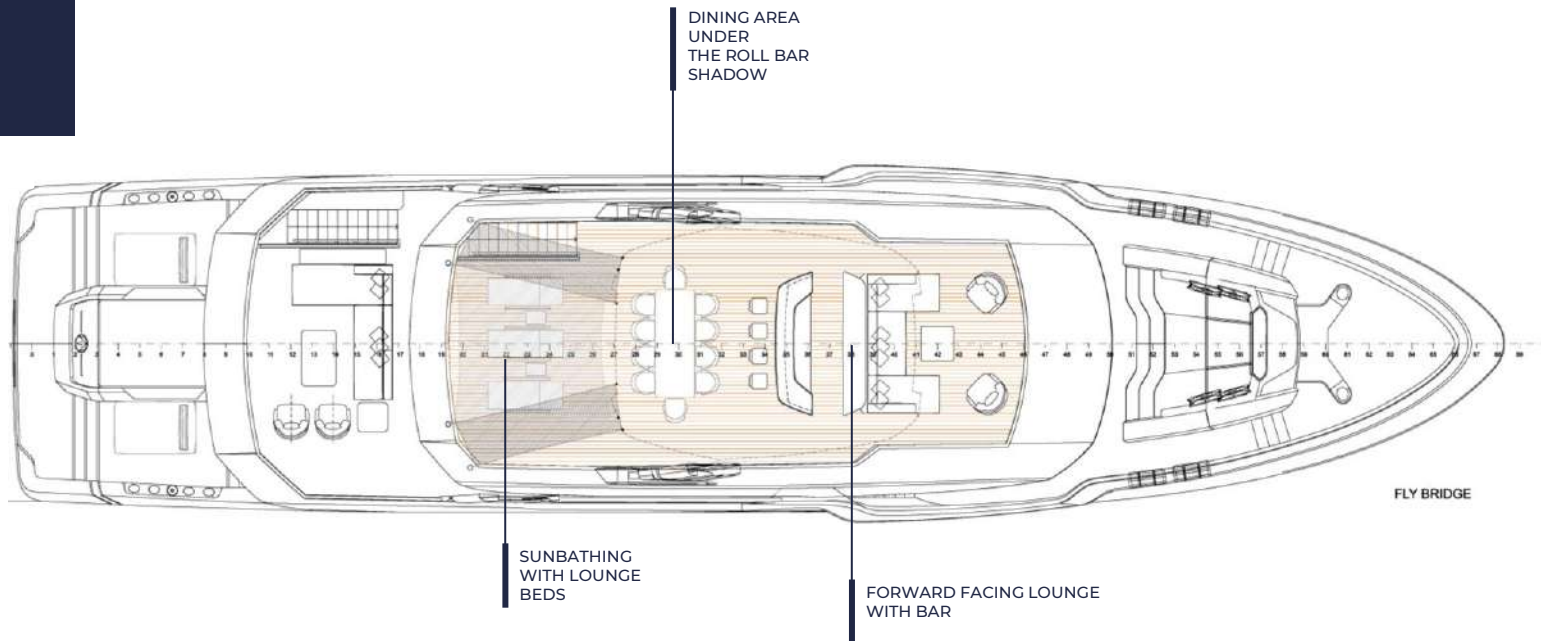


CAPTAIN CABIN

SKY LOUNGE  
optional fully  
openable side  
windows



## SUN DECK





## MAGNIFYING THE VIEW

Aft, a two-level beach club with infinity pool, integrated sun pads and lounge area help moving towards more casual and relaxed living, creating less formal spaces and large open concept.

Both on the main deck salon and on the upper deck skylounge, floor to ceiling sliding glass doors create dynamic living spaces that retain a sense of openness yet protect from natural elements. The full height windows allows natural light invade the architecture maximizing the connection with the surrounding landscape.









**MAIN DECK  
AFT COCKPIT**





**FORWARD LOUNGE  
AREA**







**UPPER DECK  
EXTERIOR LOUNGE**





SUN DECK





SUN DECK





SUN DECK





SUN DECK







**INTERIOR DECOR  
PROPOSAL  
UPPER DECK**





**UPPER DECK  
EXTERIOR LOUNGE**







**UPPER DECK  
SKYLOUNGE  
OPENABLE ON  
THREE SIDES  
THANKS TO SLIDING  
DOORS**



**UPPER DECK  
SKYLOUNGE  
OPENABLE ON  
THREE SIDES  
THANKS TO SLIDING  
DOORS**



**DESIGNER**  
**STEFANO INGLESE VAFIADIS**

**NAVAL ARCHITECT**  
**BAGLIETTO**

**MATERIAL**  
**STEEL HULL**  
**ALUMINIUM SUPERSTRUCTURE**

**CLASSIFICATION:**  
**RINA C X HULL · MACH; Y Short**  
**Range**

---

**MAIN DIMENSIONS**

---

**LOA**  
**34,50 M - 115'**

---

**MAX BEAM**  
**7,80 M - 25.5'**

---

**DRAFT**  
**2,40 M - 7.8'**

---

**GROSS TONNAGE**  
**APPROX 298 GT**

---

---

**DIESEL ENGINES PERFORMANCE**

---

**TOP SPEED**  
**14.5 kn**

---

**CRUISING SPEED**  
**13.5 kn**

---

**RANGE AT 10.0 knots 3,700 nm**

---

---

**EGINES**

---

**MAIN ENGINES**  
**2 x MAN V8 - 1200**

---

**MAX POWER**  
**882 kW (1,182 HP) AT 2,300 RPM**

---

**GENERATORS**  
**2 x Kohler, 80 ekW**

---





Baglietto DOM 115



[sales@baglietto.com](mailto:sales@baglietto.com)

+39 0187 59831