

FOR SALE

LADY R



FOR SALE

LADY R

"LADY R is a custom designed, 2003 Astondoa 95 GLX, with a breathtaking burl olive interior by Nuvolari & Lenard for up to 8 guests in 4 staterooms. She has 3 x MAN 1300hp engines and cruises at 22 knots, with a top speed of 30 knots. As well as her split level, full beam master stateroom, LADY R also offers a spacious sun deck, with the added benefit of retrofitted hard top Bimini. Never chartered and only ever very lightly used, she is to be found in excellent condition."

28.95M / 95'00"

SPECIFICATION

BUILDER	ASTONDOA
BUILT	2003
BEAM	6.20M / 20'04"
DRAFT	1.70M / 5'07"
STATEROOMS	4
GUESTS	8
CREW	4
HULL MATERIAL	COMPOSITE
SPEED	22 KNOTS / 30 MAX
FLAG	MALTA



RUNNING SHOT

FOR SALE

LADY R 28.95M / 95'00"



REAR VIEW

FOR SALE

LADY R 28.95M / 95'00"



SIDE DECK

FOR SALE

LADY R 28.95M / 95'00"



SUN DECK

FOR SALE

LADY R 28.95M / 95'00"



SUN DECK HELM STATION

FOR SALE

LADY R 28.95M / 95'00"



SALOON FWD

FOR SALE

LADY R 28.95M / 95'00"



SALOON AFT

FOR SALE

LADY R 28.95M / 95'00"



MASTER STATEROOM

FOR SALE

LADY R 28.95M / 95'00"



MASTER BATHROOM

FOR SALE

LADY R 28.95M / 95'00"



VIP STATEROOM

FOR SALE

LADY R 28.95M / 95'00"



VIP BATHROOM

FOR SALE

LADY R 28.95M / 95'00"



TWIN STATEROOM

FOR SALE

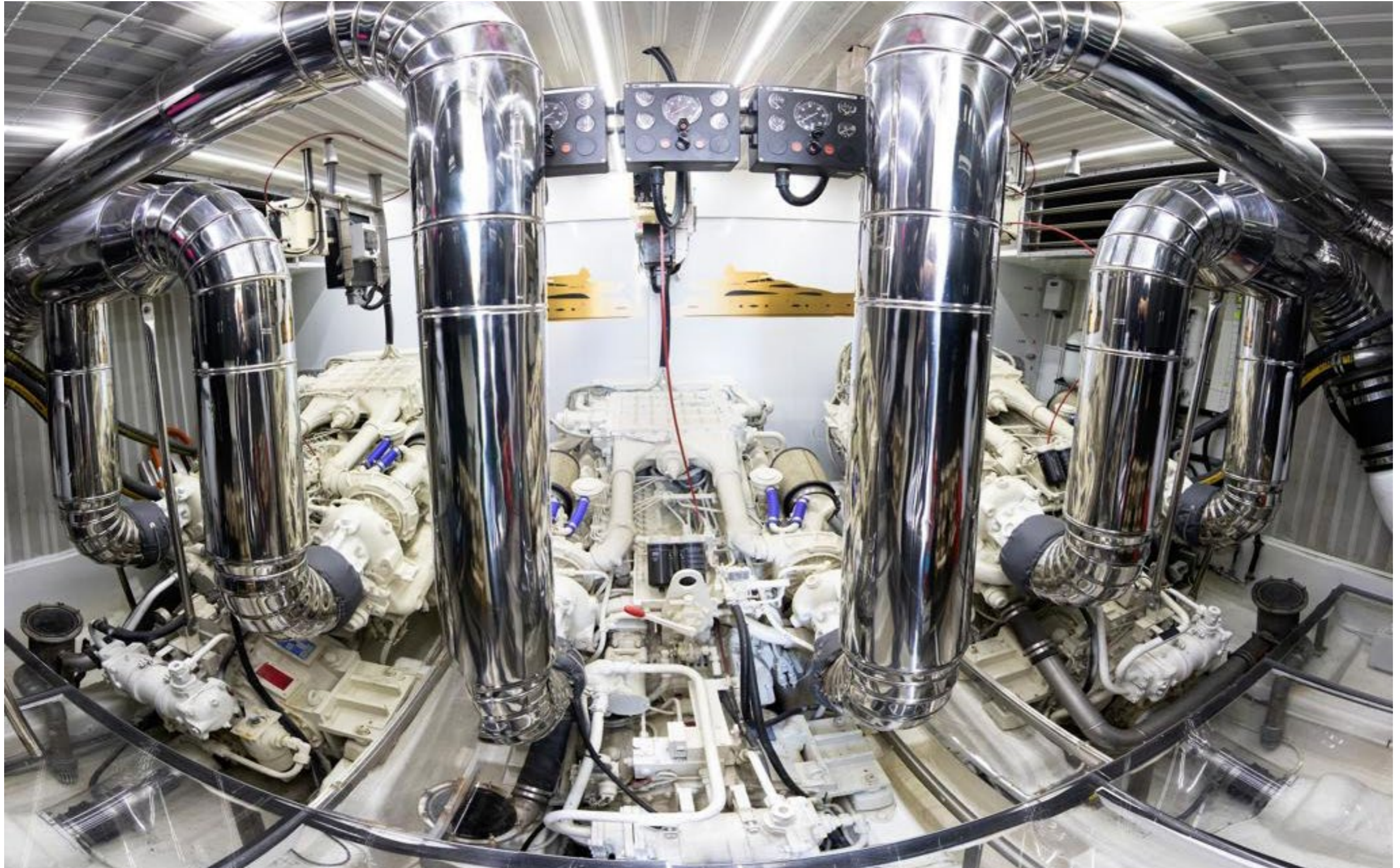
LADY R 28.95M / 95'00"



AFT DECK

FOR SALE

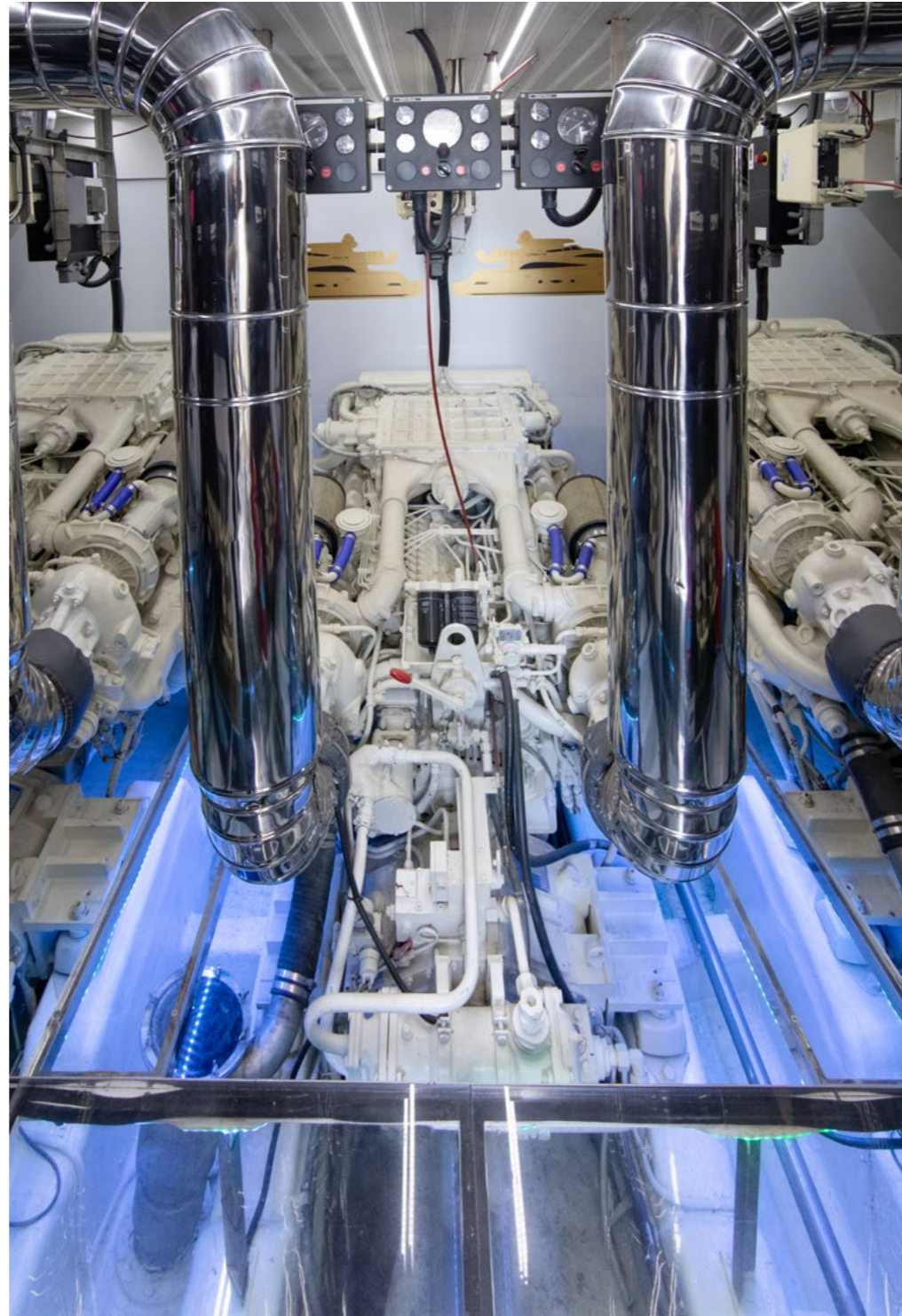
LADY R 28.95M / 95'00"



ENGINE ROOM

FOR SALE

LADY R 28.95M / 95'00"



ENGINE ROOM